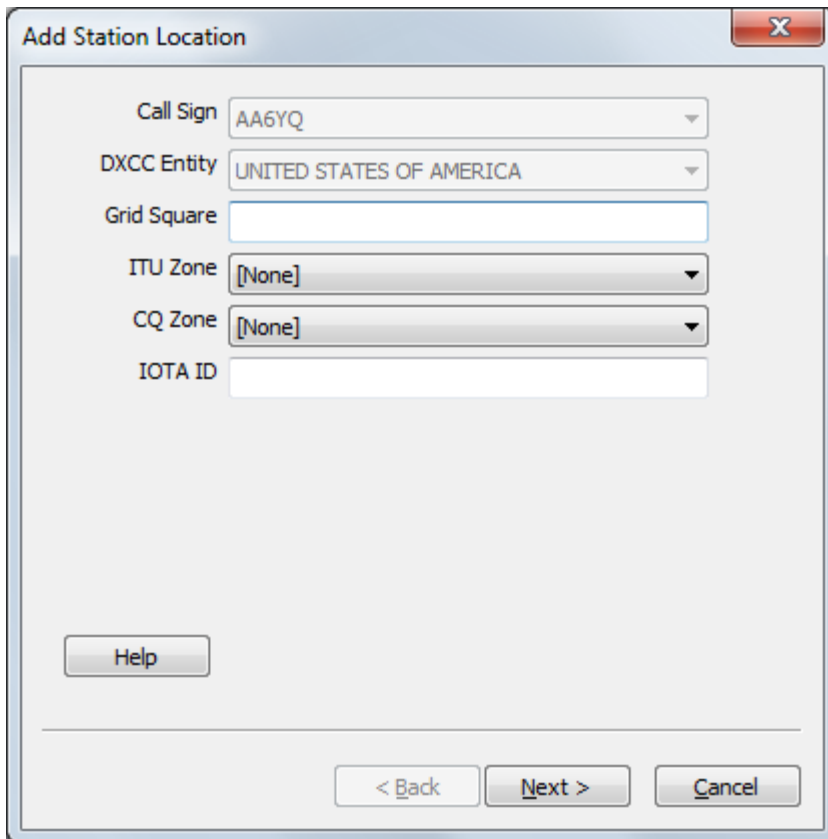


Defining or Modifying a Station Location

A *Station Location* specifies both a [Callsign Certificate](#) and an operating location.

Defining a Station Location

1. In TQSL, select the **Station Locations** tab and click the **Create a new Station Location** button; the **Add Station Location** dialog will appear.
2. In the **Add Station Location** dialog, specify your callsign, grid square, ITU zone, CQ zone, and IOTA Reference Number.



The screenshot shows the 'Add Station Location' dialog box. It has a title bar with a close button (X). The main area contains the following fields:

- Call Sign: AA6YQ (dropdown menu)
- DXCC Entity: UNITED STATES OF AMERICA (dropdown menu)
- Grid Square: (empty text box)
- ITU Zone: [None] (dropdown menu)
- CQ Zone: [None] (dropdown menu)
- IOTA ID: (empty text box)

At the bottom left is a 'Help' button. At the bottom right are three buttons: '< Back', 'Next >', and 'Cancel'.

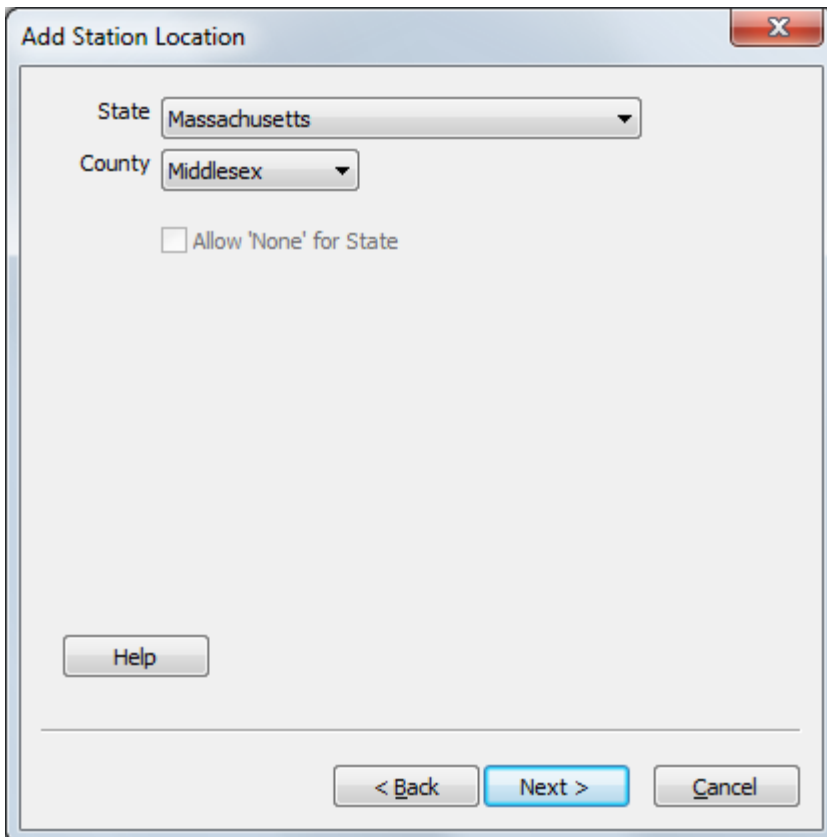
- 2.a select your callsign
- 2.b specify the **Grid Square** in which your station is located (this is particularly important if you operate on VHF or UHF frequencies or via Satellites, as it provides Grid Square credit to your QSO partners pursuing VUCC awards)
- 2.c specify the **ITU Zone** in which your station is located
- 2.d specify the **CQ Zone** in which your station is located
- 2.e if your station is located on an island, specify its **IOTA Reference Number**; use a two-character continent abbreviation followed by a dash and a 3 digit number, e.g. OC-005. If you do not know your IOTA designation, you can

find this information at <http://www.rsgbiota.org>

2.f click the **Next** button

Note: if the **DXCC Entity**, **ITU Zone**, and **CQ Zone** are mutually inconsistent, an *Invalid zone selections for DXCC entity* message will be displayed, and the **Next** button will be disabled; you must select consistent **ITU** and **CQ** zones before proceeding.

3. Depending upon your callsign's DXCC entity, the **Add Station Location** dialog may prompt you to specify your Province, Oblast, State, and/or County. The example below shows this for a station in the United States:



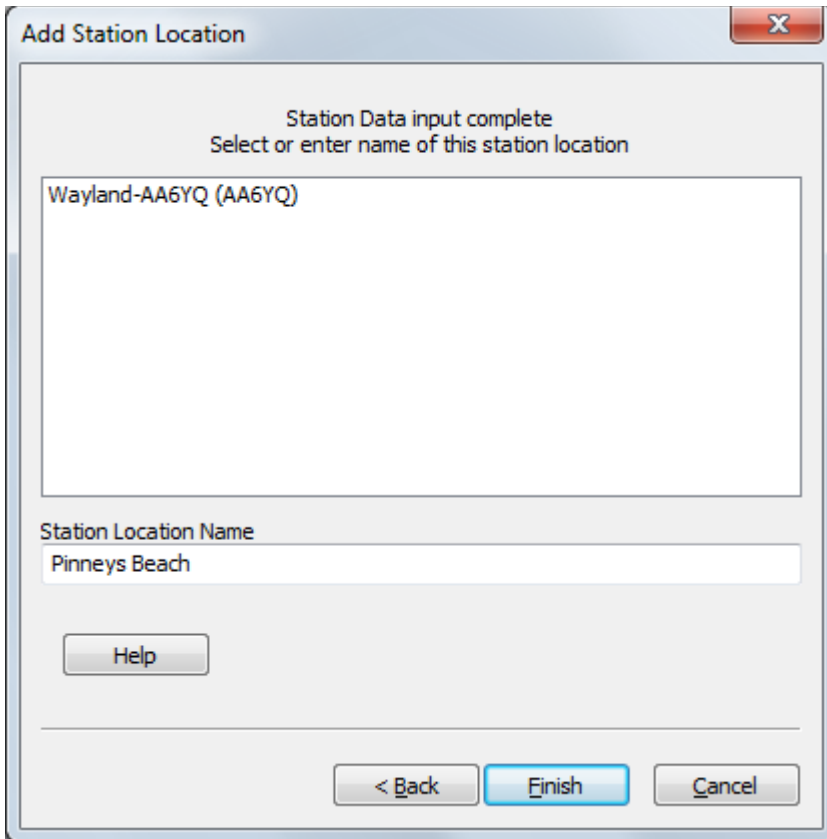
The screenshot shows a dialog box titled "Add Station Location". It contains two dropdown menus: "State" with "Massachusetts" selected and "County" with "Middlesex" selected. There is an unchecked checkbox labeled "Allow 'None' for State". At the bottom, there are three buttons: "< Back", "Next >" (which is highlighted in blue), and "Cancel". A "Help" button is also present on the left side.

3.a in the **Add Station Location** dialog, select your US **State** (this is particularly important as it provides US State credit to your QSO partners pursuing WAS awards)

3.b select your US **County**

3.c click the **Next** button

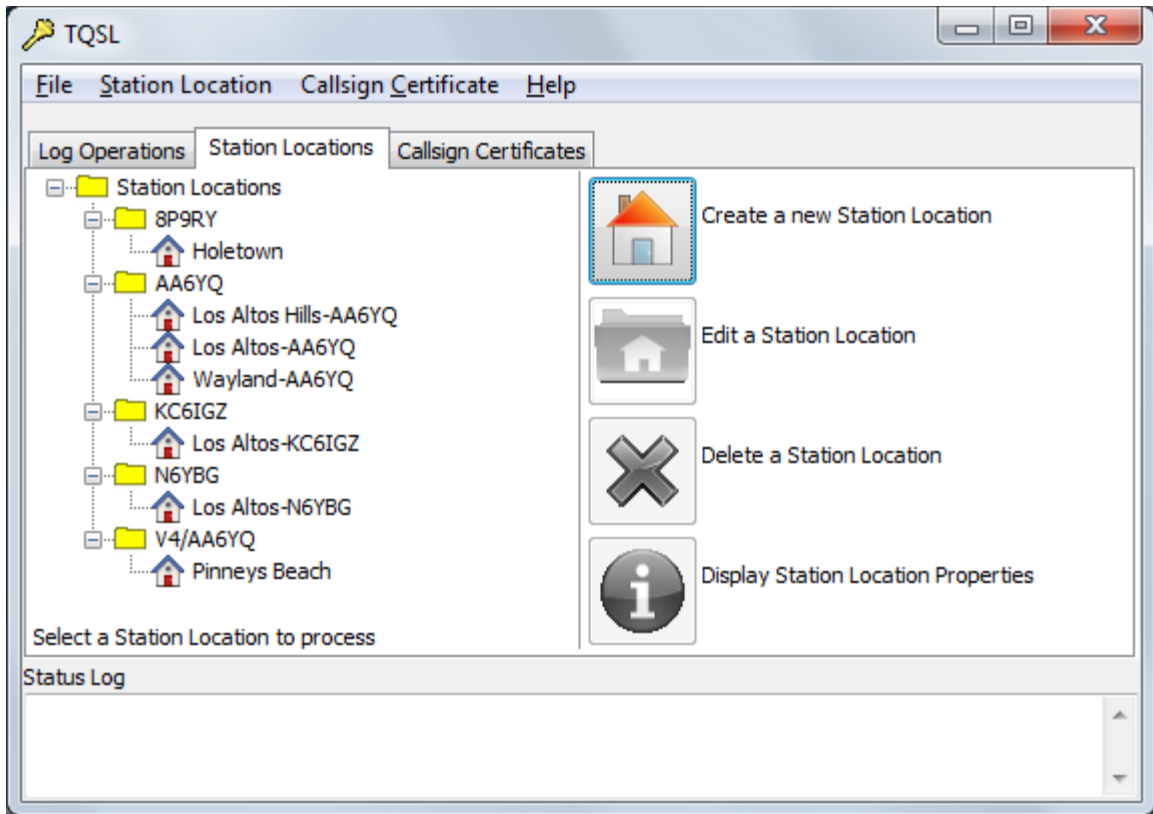
4. in the **Add Station Location** dialog, specify a **Station Location Name**.



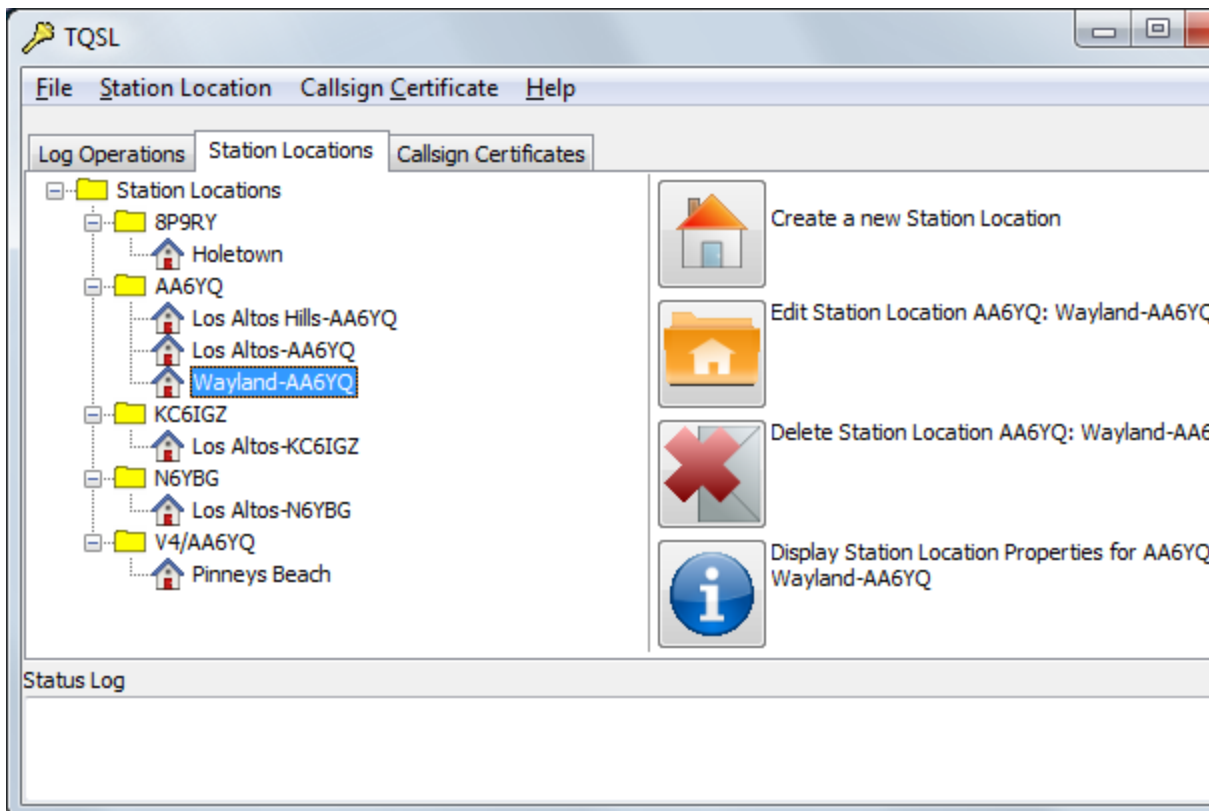
- 4.a to make this name meaningful, it is recommended that it incorporate both your callsign and town name, or callsign and location name (see [Additional Information](#) below)
- 4.b click the **Finish** button
- 4.c to protect your new Station Location, direct TQSL to create a [Backup File](#).

Modifying a Station Location

1. In TQSL, select the **Station Locations** tab, which lists your Station Locations:
-



2. On the **Stations Locations** tab, click on the name of the Station Location you wish modify:



and then click the **Edit Station Location** button; the **Edit Station Location** dialog appear.

3. In the **Edit Station Location** dialog, select a different callsign, or modify the grid square, ITU zone, CQ zone, or IOTA tag as desired.
4. Click the **Next** button. Note: if the **DXCC Entity**, **ITU Zone**, and **CQ Zone** are mutually inconsistent, an *Invalid zone selections for DXCC entity* message will be displayed and the **Next** button will be disabled; you must select consistent **ITU** and **CQ** zones before proceeding.
5. If your station is in a DXCC entity for which a Province, Oblast, State, and/or County be selected, modify your selection(s) as desired.
6. Click the **Next** button.
7. Modify the Station Location Name as desired.
8. Click the **Finish** button.
9. To protect your modified Station Location, direct TQSL to create a [Backup File](#).

Additional Information

- If you always operate with the same callsign and from one location, use a name that combines them both, e.g. K9UW(Amherst) or AA5AU-Louisiana. If you operate with more than one callsign or from more than one location, see this [example](#).
- You can [move a Station Location from one computer to another](#)